

PART OF THE S. 1/2, SEC. 30, T.6N., R.1W., S.L.B. & M.

21

BROOKLYN ADDITION

BLOCKS 8,9,14 & 15

TAXING UNIT: 25

SEE PAGE 20

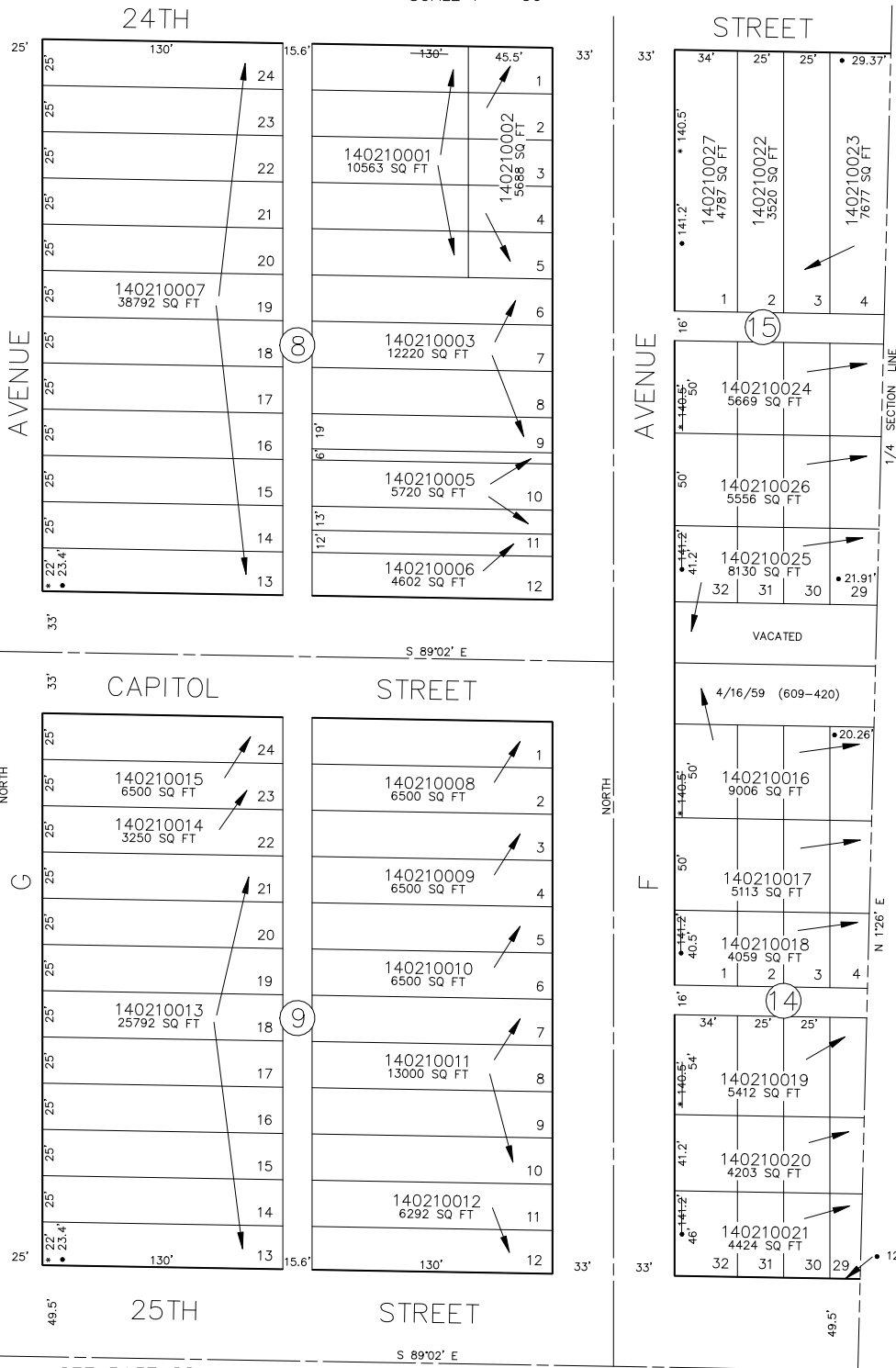
IN OGDEN CITY

SCALE 1" = 50'

SEE PAGE 19

24TH

STREET



SEE PAGE 33

SEE PAGE 26